



GDI-8003-01 / GDI-8005-01

3 and 5 Person Steam Saunas



Owner's Manual

SAUNA IS FOR OUTDOOR USE

120V 15AMP Outlet Required

Dedicated 240V 40AMP Circuit Required (for heater)

Carefully and thoroughly read this Owner's Manual before using/operating the sauna. We recommend keeping this Owner's Manual for regular review and future reference. Follow your local codes and ordinances. The heater must be installed by a certified licensed electrician per the manufacturer's manual. The heater must be installed per the electrical code in your area with reference to the breaker and wire sizes. Models are subject to change.

Thank you for your purchase. As you remove the parts from the boxes, be sure to examine them for damages. If your unit has any damages or missing parts, please contact Golden Designs Inc. See the Warranty section for more information.

A Certified Licensed Electrician will be needed to install the electrical wiring. Due to the heat of the sauna, it is required that copper wire with 90° Celsius rating be used. Aluminum wiring cannot be used in this application. Consult with your electrician regarding the electrical requirements in your area. All wiring must be in accordance with all national, state, and local codes and regulations. Your electrician will supply the needed wiring and connections.

Before assembling, make sure the surface in which the sauna will be placed on is level/dry and can support the weight of the sauna and its occupants. **The entire floor panel of the sauna room must be completely level and well supported.** We recommend a concrete base or wood deck to support the sauna. If you will be placing the sauna directly on the ground, you must use such materials as concrete cinder blocks or other similar supporting structure to prevent the sauna from settling into the ground over time.

For sauna models specifically designed to be outdoors, the wood can withstand the weather elements with proper maintenance – applying an exterior wood water repellent treatment within a month of assembly and 2-3 times per year from there on. The outdoor model saunas were designed to be placed in the rain and sun. Please note that the natural weathering elements will change the color of the wood over time. For sauna models placed directly in the weather elements, you will have some water seepage. The water seepage will not damage the sauna and usually dries quickly when the sauna is in operation. Do not use outdoor sauna models during rain storms.

The information provided in this Owner's Manual is for informational purposes only and may not be construed as medical advice or instruction. The information is not recommended for any particular treatment and in all cases, it is recommended that you consult with your medical physician before using. This product does not constitute or imply any medical endorsement. The pictures and diagrams shown within this Owner's Manual are representations of this model(s). Actual model may vary.

FOLLOW ALL INSTRUCTIONS AND BE CAUTIOUS OF SAFETY SYMBOLS.
All electrical wiring must be performed by a certified licensed electrician.
Although this manual is a universal manual, the information within this manual is applicable to each sauna.



High Voltage Symbol: Be cautious as there is the presence of a high voltage current that flows through the equipment!



General Caution Symbol: Be cautious as the equipment uses electrical current that can cause serious injury.

ATTENTION

⚠ WARNING

1. Please read this Owner's Manual thoroughly before use. This will allow the user to become familiar with the operation of the control system. Please keep the Owner's Manual available for future reference. If any technical assistance or repairing is needed, please contact the manufacturer.
2. The sauna will need to be installed outdoors. If installed outdoors and over time, water may seep into the sauna room. When not in use and placed outdoors, a rain cover is recommended to cover the sauna room if your model does not come with an actual outdoor roof. Please note that water seepage will not hurt the wood and will usually dry quickly due to the heated environment. If you want to keep the sauna completely dry, you will need to install the sauna under a covered structure.
3. To reduce the risk of electric shock and/or fire, do not expose the control system to direct water contact or rain. Do not open the cover to the control system as there are high tension fittings that can be dangerous. Only dealer authorized qualified technicians should make any needed or necessary repairs at any time.
4. Any repairs, alterations, or modifications to the control system are not authorized unless by an approved repair technician. Any non-authorized repairs, alterations, or modifications can lead to serious injuries and can cause the unit to work outside its intended specification parameters.
5. Any non-authorized repairs, alterations, or modifications will void the warranty.
6. Before connecting the unit to a power source, please make sure that all wires, cords, and connections are connected properly. If there are any concerns, please consult with a certified electrician.
7. Make sure that the sauna is placed in a well-ventilated area. It should not be placed in an area with other thermal-radiating objects. Make sure that the vents will not be obstructed for proper air flow.

8. When the equipment is not going to be used for an extended period of time, you can disconnect the sauna from the power source or turn OFF the dedicated circuit breaker.
9. Allow 30 seconds between turning the control system “On” and “Off”. By allowing 30 seconds between powering the control system “On” and “Off” will prolong the life of the unit.
10. Confirm that you adhere to the correct power requirements of the control system. Connecting the control system to other than the required voltage can damage the control system and possibly cause serious injury. It is very important that the load parameters are consistent with that needed by the control system. Always consult with a certified electrician.
11. Canadian Red Cedar (pertaining only to sauna models constructed of Red Cedar) and its rich aroma can cause an extremely small percentage of the population to have an adverse reaction known as Multiple Chemical Sensitivity (MCS). While this is not a universally recognized disorder in the medical field, certain consumers have an adverse physical reaction to low levels of many common chemicals and cannot tolerate any aromatic oils, shampoos with perfumes infused or certain herbs with natural aromas. However, for the majority of the population, Canadian Red Cedar is the sauna wood of choice.
12. Children must use the sauna under the care of adults and only after consulting with a medical doctor. Never play in or around the sauna. Never put animals into the sauna room.
13. The power cord and plug must be located out of the reach of children and away from any water source. Please consult with a certified electrician for safety concerns.
14. Never insert body parts or any other objects into the heater. Never put any foreign objects on or in the heater. Please follow the heater instructions and safety precautions.
15. Never use or store flammable liquids/gases/objects near or inside the sauna or around/above the heaters.
16. Never store items or objects on top of the sauna.
17. Never use the sauna or heater if the power cord is damaged. Contact Customer Service immediately and do not use the sauna.
18. Never touch the control panel, heater parts, or any electrical parts with wet hands.
19. Never use the sauna in a weather storm.
20. Make sure that the sauna sits on a level surface and the surface can support the weight of the sauna (when filled with users) which can exceed 1000 lbs. A concrete slab, concrete pavers, gravel, cinder blocks, or solid wood deck is always best for outdoor installations. In addition, be sure that the support cradles rest on cinder blocks or other structures so as to prevent sinking/settling into the ground.
21. For every (4) hours of use, the sauna should be shut down for (1) to prevent overheating and premature deterioration of the equipment.

- 22.** Never complete unauthorized repairs on the sauna or the heater.
- 23.** Never use the sauna in combination with alcohol, medication, or drugs.
- 24.** Pregnant women should never use the sauna. Women should also not use the sauna during their menstrual cycle.
- 25.** If you have any medical condition, you must consult with your medical doctor before using the sauna.
- 26.** Be cautious not to over extend yourself after an intense exercise workout by using the sauna. You can let the body cool down for 10 - 20 minutes before entering the sauna.
- 27.** Prolonged exposure to high temperatures can cause burns. Stop using the sauna immediately if you experience overheating, dizziness, weakness, sleepiness, or fainting.
- 28.** Consult with your medical doctor before using the sauna if you suffer from diabetes, blood circulation disease, blood pressure issues, heart disease, or obesity.
- 29.** Watch your head when entering and exiting the sauna.
- 30.** Never clean the sauna with chemical-based cleaners or detergents. You can clean the sauna with any non-toxic, water-based cleaners.
- 31.** Make sure the vents are always unobstructed.
- 32.** Being that the sauna will operate in different climates (some areas are colder than others), it is not recommended to use the traditional sauna above 190 degrees Fahrenheit / 88 degrees Celsius.
- 33.** To avoid a hazard, do clean the sauna floor of all perspiration and debris after each sauna session.

TABLE OF CONTENTS

Visual Assembly Diagrams	7
Parts Description	9
Schematic Layout	11
Dimensional Diagram	13
Screw Identification	15
Wall Panel Descriptions	16
Assembly Instructions	17
Sauna Control Panel	25
Maintenance	27
Tips for Using Your Sauna	27
Safety Instructions	28
Safeguards for Your Sauna	30
Warranty	31
Warranty Registration	33

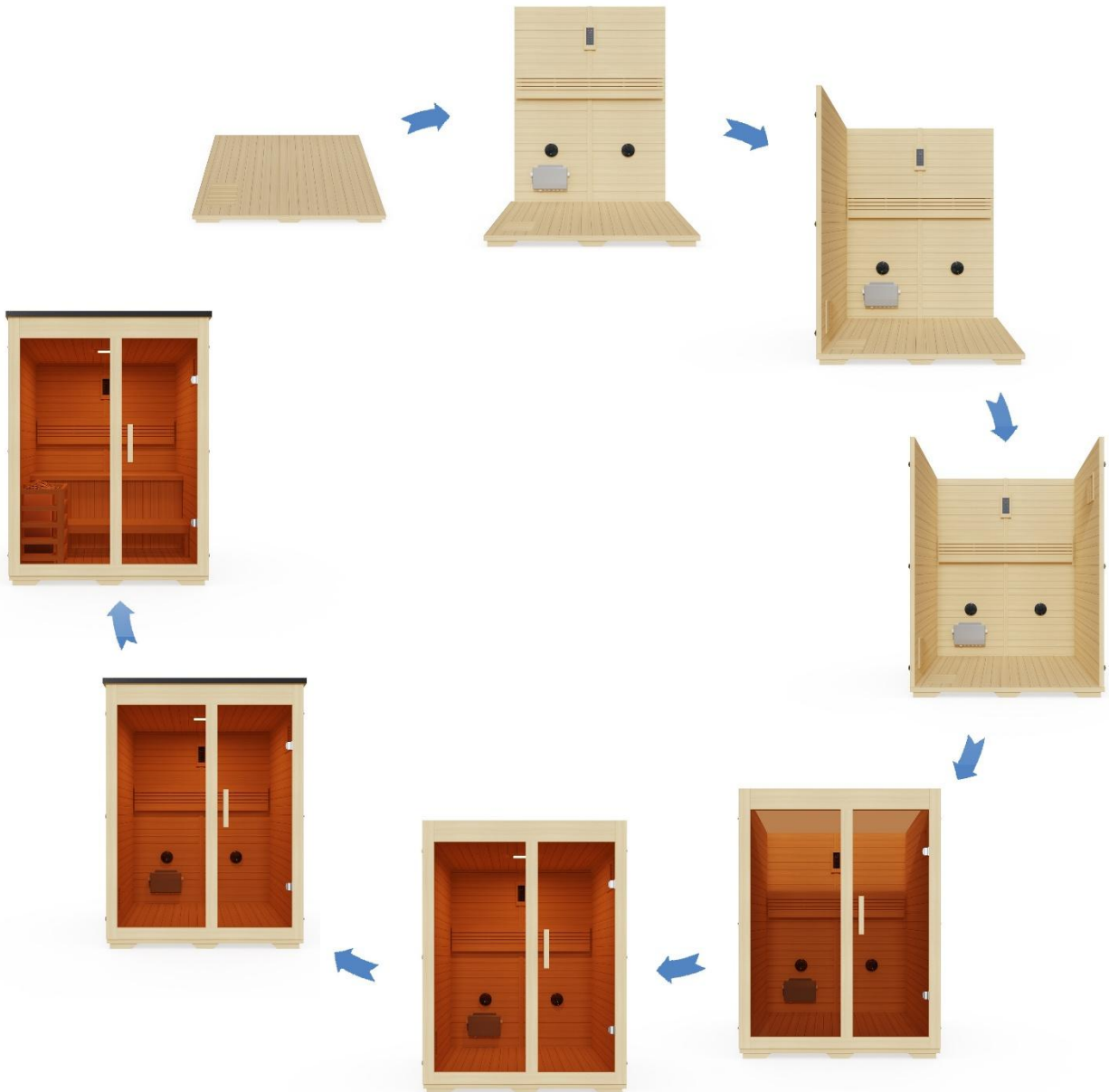
WARNING: Visually inspect all heaters before assembly to make sure they are not damaged. Any excessive vibrations during transport could cause damage to the sauna parts. **DO NOT OPERATE** the sauna if damage is detected! Contact your dealer or manufacturer for troubleshooting and replacement parts. The wood is naturally resistant to the weather elements, but the weathering elements can affect the wood over time.

PLEASE NOTE: The pictures and diagrams shown within this owner's manual are representations of this model. Actual models may vary. Design and construction are subject to change. If installed outdoors and over time, water may seep between the gaps of the construction. This would be considered normal. When not in use and placed outdoors, a water proof cover can be used to cover the sauna room.

CAUTION: Exit Sauna Immediately If You Feel Dizzy, Sleepy, Or Any Discomfort.

PLEASE READ INSTRUCTIONS THOROUGHLY BEFORE ASSEMBLY

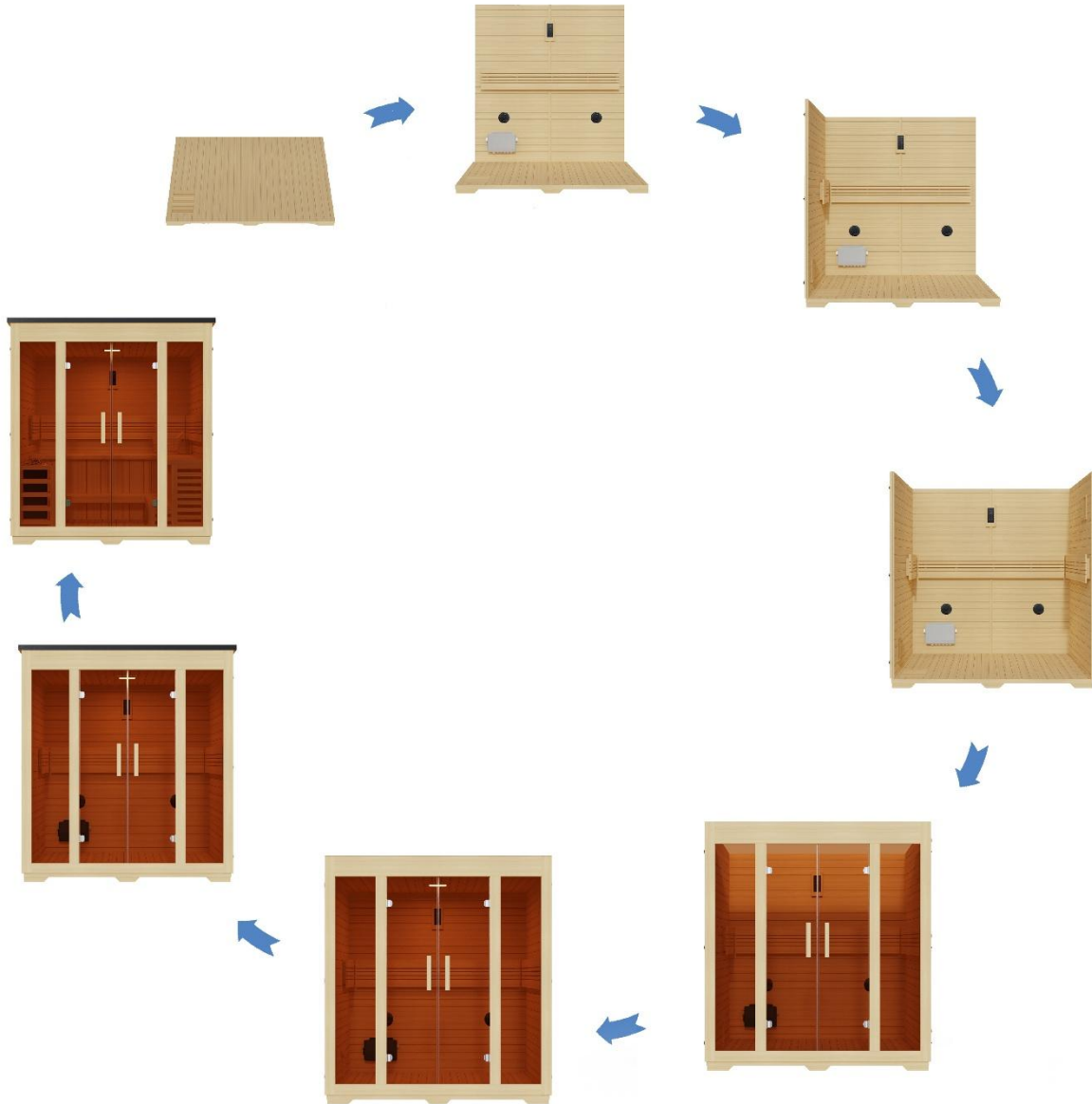
**Visual Assembly Diagram
GDI-8003-01**



***THE ABOVE ASSEMBLY DIAGRAM IS FOR A QUICK REFERENCE VISUAL GUIDE ONLY. ALL SAUNA MODELS MAY NOT BE SHOWN. PARTS AND ACCESSORIES DO VARY AND ARE SUBJECT TO CHANGE.**

PLEASE READ INSTRUCTIONS THOROUGHLY BEFORE ASSEMBLY

**Visual Assembly Diagram
GDI-8005-01**

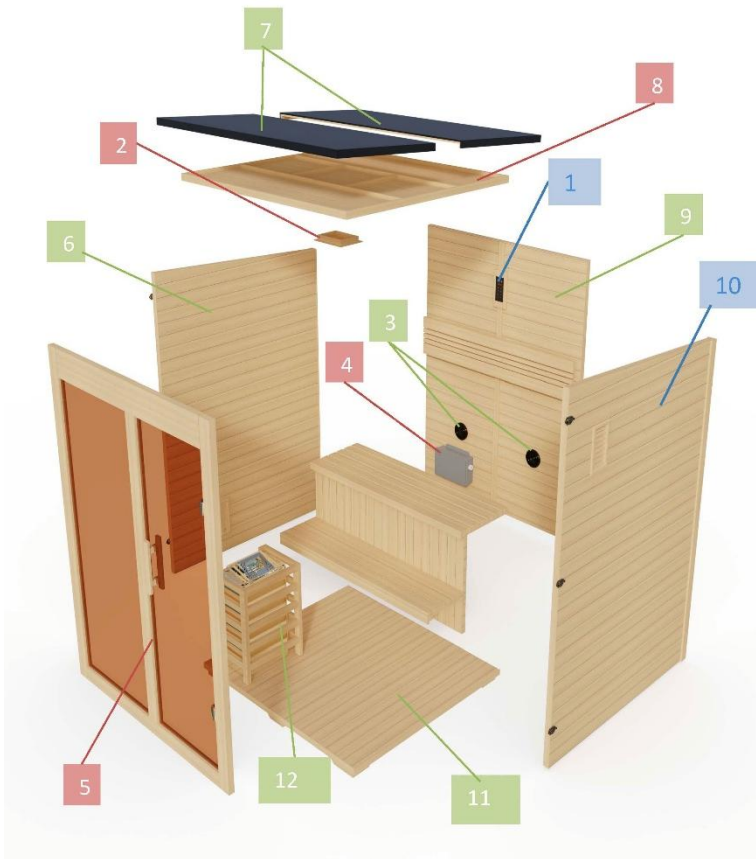


***THE ABOVE ASSEMBLY DIAGRAM IS FOR A QUICK REFERENCE VISUAL GUIDE ONLY. ALL SAUNA MODELS MAY NOT BE SHOWN. PARTS AND ACCESSORIES DO VARY AND ARE SUBJECT TO CHANGE.**

PLEASE READ INSTRUCTIONS THOROUGHLY BEFORE ASSEMBLY

PARTS DESCRIPTION

GDI-8003-01



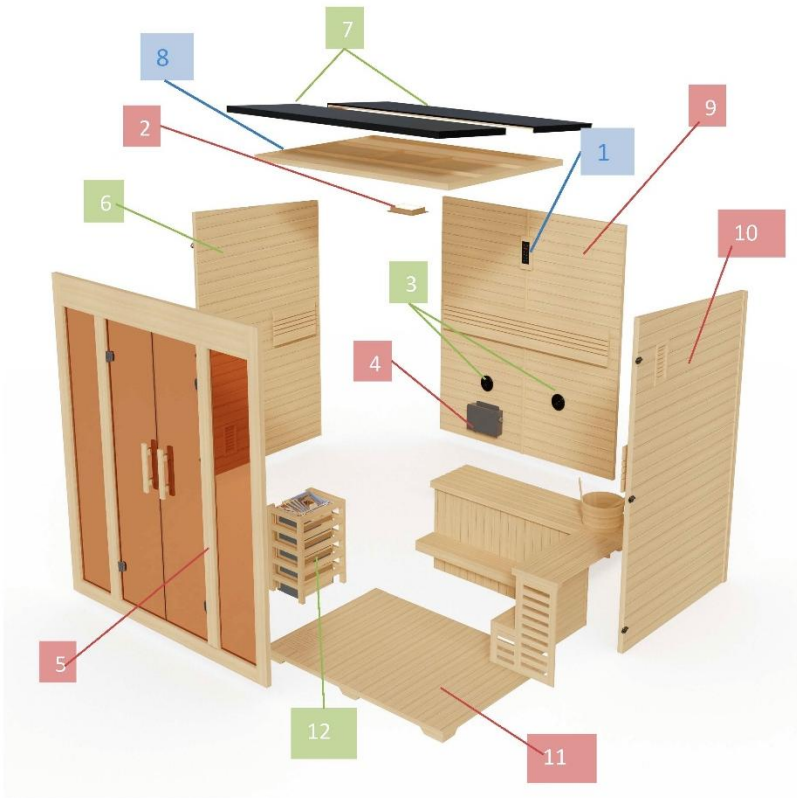
Electronic components			
No.	Name	No.	Name
1	Control panel	2	color light w/red light therapy
3	Speakers	4	Power supply

No.	Name
5	Front wall panel
6	Left side wall panel
7	Exterior roof panel
8	Interior roof panel
9	Rear wall panel
10	Right side wall panel
11	Floor panel
12	Stove Guard

***THE ABOVE DIAGRAM IS FOR A QUICK REFERENCE VISUAL GUIDE ONLY. ALL SAUNA MODELS MAY NOT BE SHOWN. PARTS AND ACCESSORIES DO VARY AND ARE SUBJECT TO CHANGE.**

PLEASE READ INSTRUCTIONS THOROUGHLY BEFORE ASSEMBLY

PARTS DESCRIPTION
GDI-8005-01



Electronic components			
No.	Name	No.	Name
1	Control panel	2	color light w/red light therapy
3	Speakers	4	Power supply

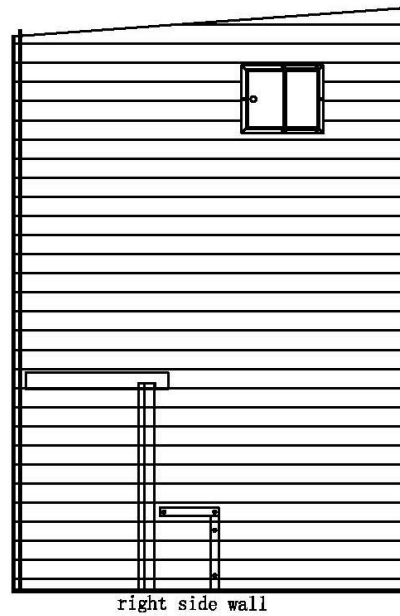
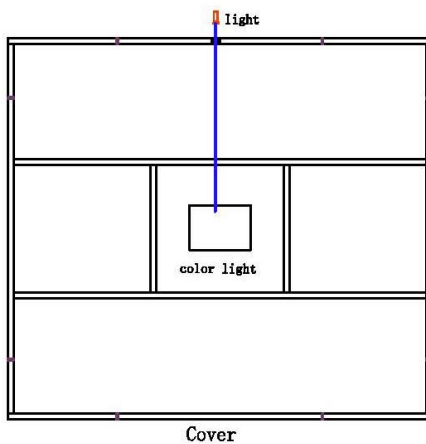
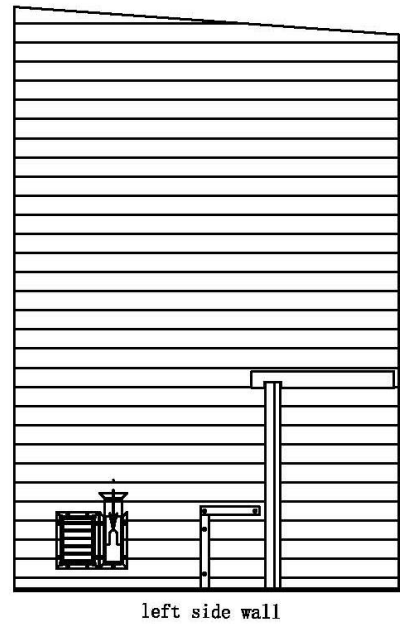
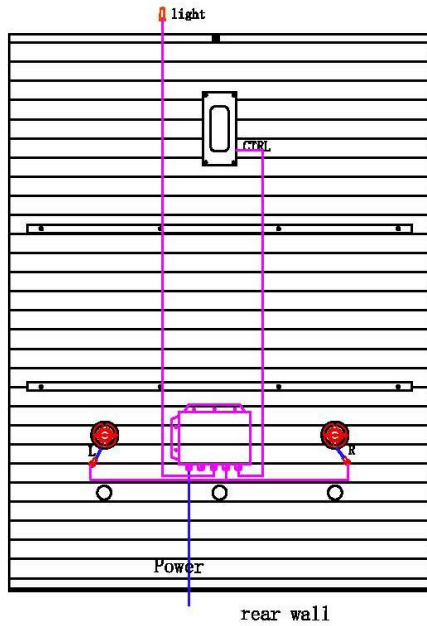
No.	Name
5	Front wall panel
6	Left side wall panel
7	Exterior roof panel
8	Interior roof panel
9	Rear wall panel
10	Right side wall panel
11	Floor panel
12	Stove Guard

***THE ABOVE DIAGRAM IS FOR A QUICK REFERENCE VISUAL GUIDE ONLY. ALL SAUNA MODELS MAY NOT BE SHOWN. PARTS AND ACCESSORIES DO VARY AND ARE SUBJECT TO CHANGE.**

PLEASE READ INSTRUCTIONS THOROUGHLY BEFORE ASSEMBLY

SCHEMATIC LAYOUT

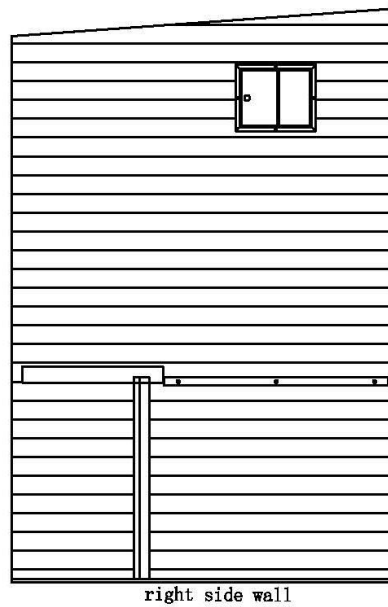
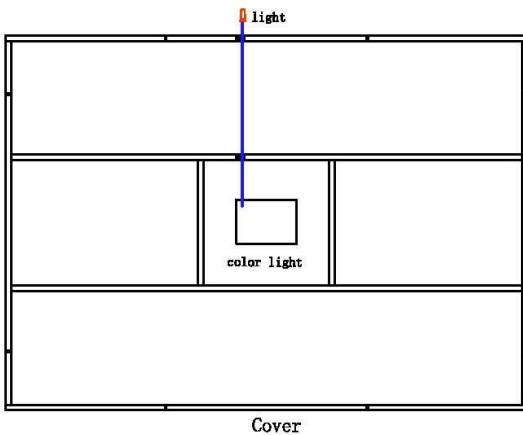
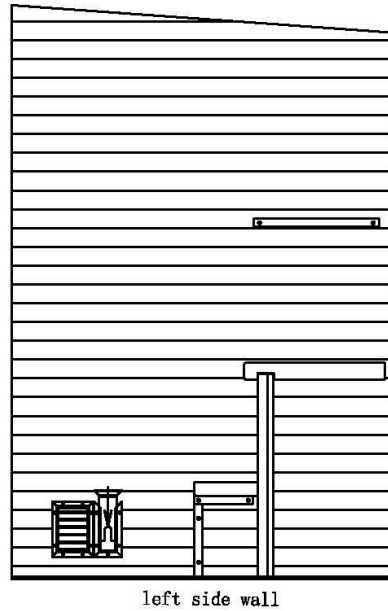
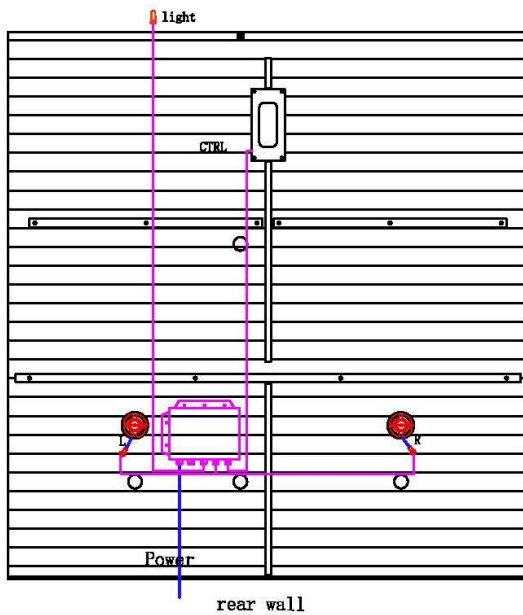
GDI-8003-01



***THE ABOVE DIAGRAM IS FOR A QUICK REFERENCE VISUAL GUIDE ONLY. ALL SAUNA MODELS MAY NOT BE SHOWN. PARTS AND ACCESSORIES DO VARY AND ARE SUBJECT TO CHANGE.**

PLEASE READ INSTRUCTIONS THOROUGHLY BEFORE ASSEMBLY

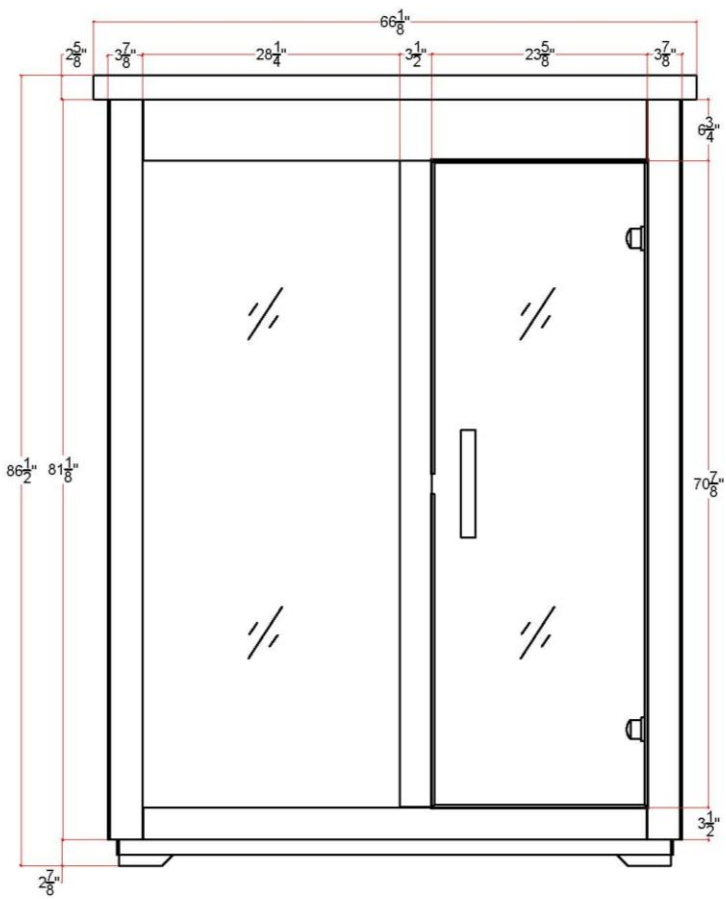
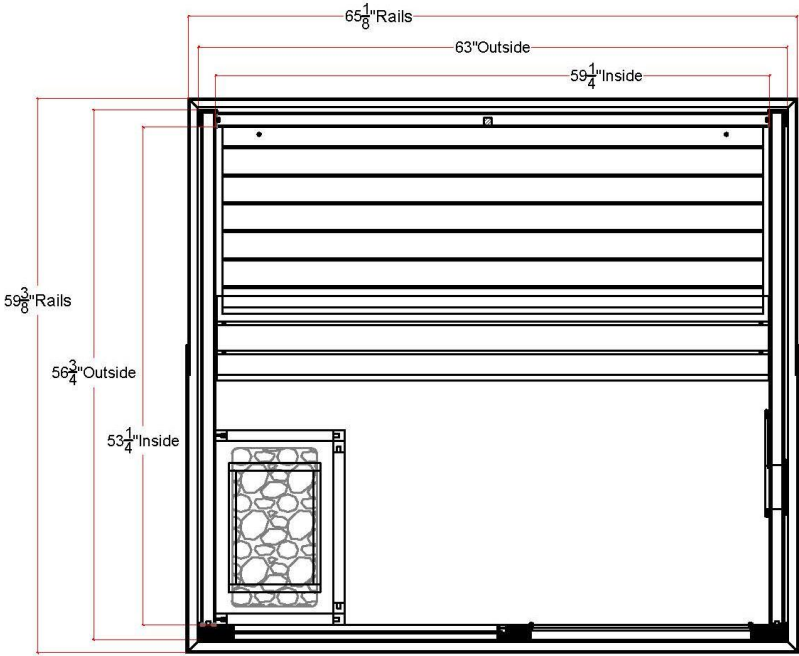
SCHEMATIC LAYOUT GDI-8005-01



***THE ABOVE DIAGRAM IS FOR A QUICK REFERENCE VISUAL GUIDE ONLY. ALL SAUNA MODELS MAY NOT BE SHOWN. PARTS AND ACCESSORIES DO VARY AND ARE SUBJECT TO CHANGE.**

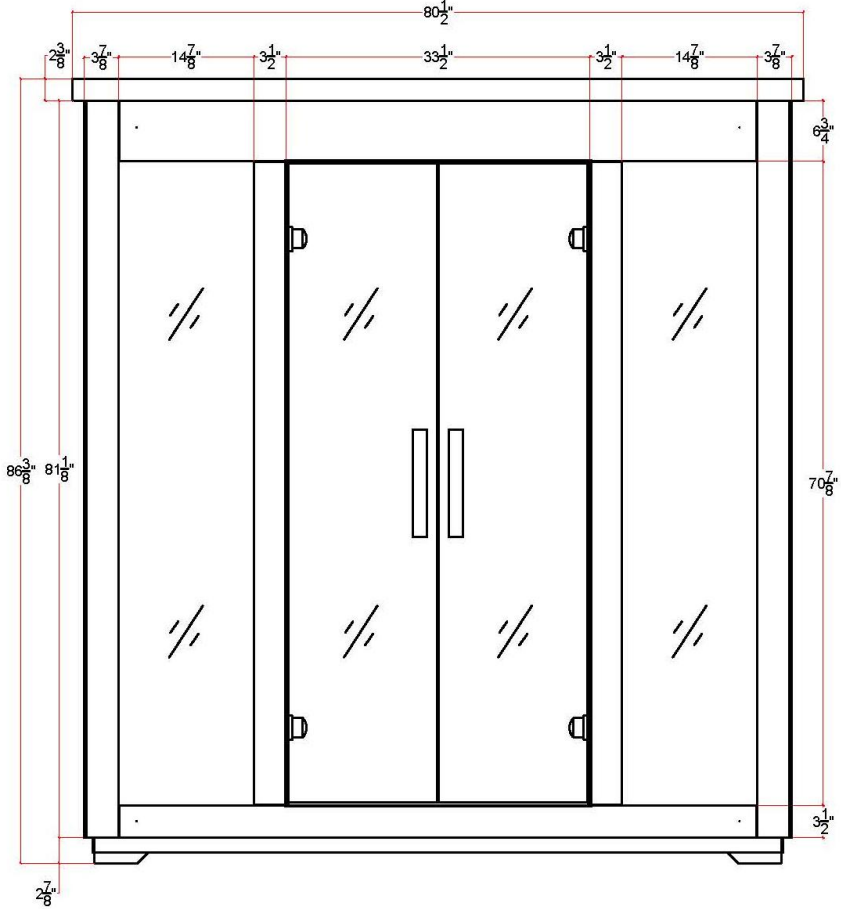
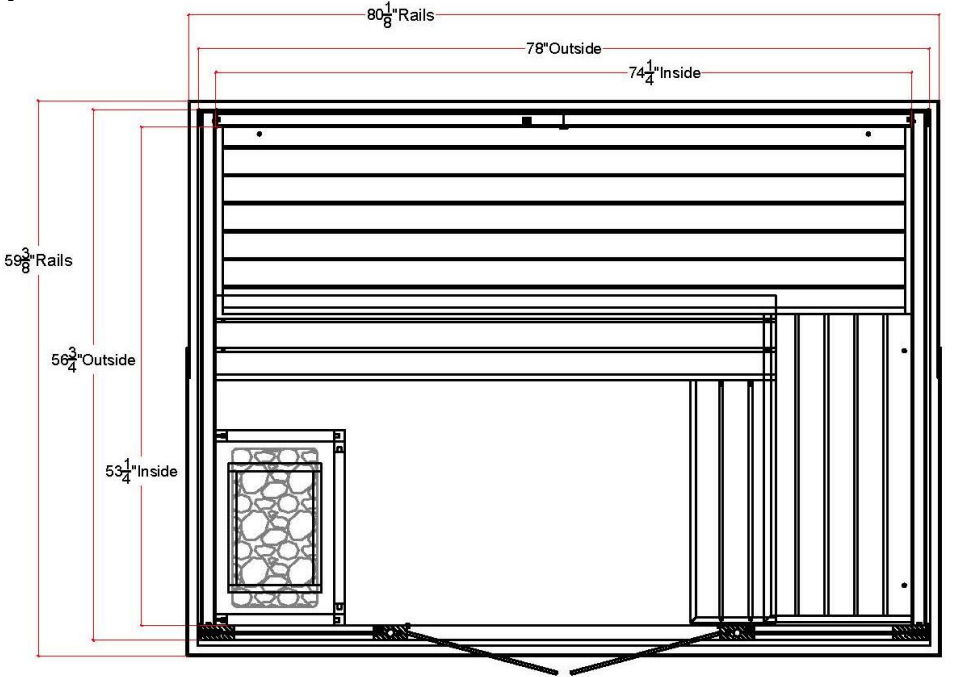
DIMENSIONAL DIAGRAM

GDI-8003-01



DIMENSIONAL DIAGRAM

GDI-8005-01



Screw Identification Chart



SCREW IDENTIFICATION AND LOCATION CHART:

MODEL: GDI-8003-01		
LOCATION	SPECS	USAGE
OUTSIDE ROOF PANEL	5x25mm(Stainless steel screw-black color)	4
OUTSIDE ROOF PANEL	5x70mm(Stainless steel screw-black color)	16
INTERIOR ROOF PANEL	5x40mm(wood screw-gold color)	8
HOURGLASS	3x18mm(wood screw-gold color)	2
STOVE GUARD	3.5x40mm(wood screw-gold color)	10
BACKREST	3.5x40mm(wood screw-gold color)	3
BENCH + BENCH SUPPORT	3.5x40mm(wood screw-gold color)	8
STEP + SUPPORT	3.5x40mm(wood screw-gold color)	8
MODEL: GDI-8005-01		
LOCATION	SPECS	USAGE
OUTSIDE ROOF PANEL	5x25mm(Stainless steel screw-black color)	4
OUTSIDE ROOF PANEL	5x70mm(Stainless steel screw-black color)	16
INTERIOR ROOF PANEL	5x40mm(wood screw-gold color)	8
HOURGLASS	3x18mm(wood screw-gold color)	2
STOVE GUARD	3.5x40mm(wood screw-gold color)	10
BACKREST	3.5x40mm(wood screw-gold color)	9
BENCH + BENCH SUPPORT	3.5x40mm(wood screw-gold color)	22
STEP + SUPPORT	3.5x40mm(wood screw-gold color)	16

***THE ABOVE IS FOR A QUICK REFERENCE VISUAL GUIDE ONLY. ALL SAUNA MODELS MAY NOT BE SHOWN. PARTS AND ACCESSORIES DO VARY AND ARE SUBJECT TO CHANGE.**

Wall Panel Descriptions

- A. The wall panels can be seen in the image below. The control panel and speakers will be located on the REAR WALL PANEL. There will be a vent on the lower LEFT SIDE WALL PANEL and a vent on the upper RIGHT SIDE WALL PANEL. The vents will be closer towards the front of the sauna room. The CONTROL PANEL/LIGHTS JUNCTION BOX will be in the interior on the REAR WALL PANEL. The BACKREST will be on the REAR WALL PANEL on GDI-8003-01 and also on the SIDE WALL PANELS on GDI-8005-01. (see Figure 1)

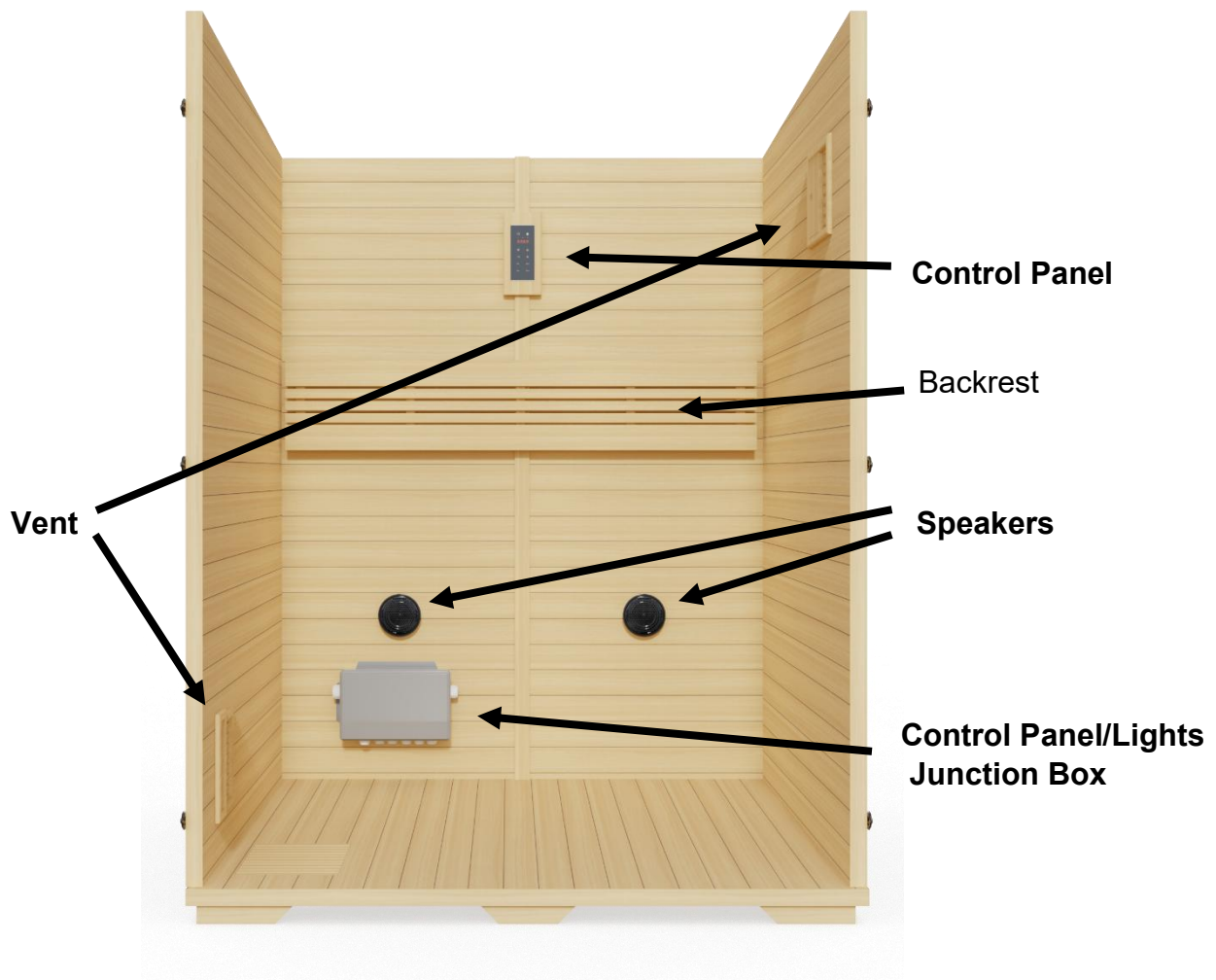


Figure 1 (GDI-8003-01 used above)

NOTE: The pictures and diagrams shown above/below are for representational purposes only. Actual model may vary. Parts subject to change.

Assembly Instructions

A. Choose a good location to install the sauna

1. The location must be dry, leveled, and away from any source of water.
2. The heater must be installed by a certified electrician.
3. Three adults are recommended for installation.
4. Sauna Panels: FLOOR PANEL – REAR WALL PANEL – LEFT SIDE WALL PANEL – RIGHT SIDE WALL – FRONT WALL PANEL – INTERIOR CEILING PANEL – OUTER ROOF PANEL – BENCHES/BENCH SUPPORTS – STEP
5. Tools Required: Battery Operated Screwdriver or Hand-Held Philips Screwdriver, Rubber Mallet (if needed), Leveler, and (2) Ladders.
6. You will need 1"-2" clearance around the unit and 10"-12" clearance above the unit. Additionally and for proper air circulation, you will need 12" at the vents on the side wall panels.

B. Installing the FLOOR PANEL and REAR WALL PANEL

1. You will need to have enough space to navigate around the sauna room while assembling. First, locate the FLOOR PANEL. Place it with the side that has the sticker at what will be the front of the sauna. The floor grid will be towards the front at the left side and the wood pattern will go from front to rear. Next, locate the REAR WALL PANEL. It will have the CONTROL PANEL/LIGHTS JUNCTION BOX towards the bottom left side interior as seen in Figure 1. Lift the REAR WALL PANEL up and onto the FLOOR PANEL. Notice how the REAR WALL Panel sits partially on the FLOOR PANEL. (see Figure 2)



Figure 2

C. Installing the LEFT SIDE WALL PANEL and RIGHT SIDE WALL PANEL

1. While one adult is holding the REAR WALL PANEL on the FLOOR PANEL, the other two adults can locate the LEFT SIDE WALL PANEL and lift it up and onto the FLOOR PANEL. Make sure that it fits next to the REAR WALL PANEL snug and tight and use the buckles to latch the two wall panels together. Notice how the LEFT SIDE WALL Panel sits partially on the FLOOR PANEL. The two adults will now do the same for the RIGHT SIDE WALL PANEL. (see Figure 3)

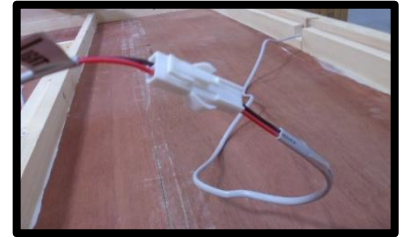


Wall Panels Will
Overhang
Figure 3

D. Installing the FRONT WALL PANEL and INTERIOR CEILING PANEL

1. For installing the FRONT WALL PANEL, you will want to spread the two side wall panels slightly (about $\frac{1}{4}$ ") so that the FRONT WALL PANEL can fit in between the two side wall panels. Two adults can now locate the FRONT WALL PANEL and place it up and onto the FLOOR PANEL and in between the side wall panels. Be sure the side wall panels are pushed inward for a tight and snug fit and use the buckles to latch the FRONT WALL PANEL to the side wall panels. For installing the Interior Ceiling, two adults will need to be on the exterior at the rear and one adult in the interior. The two adults will locate the INTERIOR CEILING PANEL and lift it up and over the REAR WALL PANEL to the adult on the interior. The two adults can use two ladders if necessary. The adult on the interior will balance the INTERIOR CEILING PANEL lowering it down into position. Be sure that the LIGHT wire is fed properly from the REAR

WALL PANEL and up on the rooftop where it will need to be connected to its counterpart connection. Use the provided screws to screw the INTERIOR CEILING PANEL to the wall panels at the predrilled holes on the rooftop. (see Figure 4)



**LIGHT WIRE
Connection**

Figure 4

Note: Remove black plastic transport corners from the corners of the glass door if present.

E. Installing the OUTER ROOF PANEL

1. Locate the OUTER ROOF PANEL. Three adults can locate the OUTER ROOF PANEL and lift it up and over the REAR WALL PANEL and on top of the wall panels. Use the provided screws to screw the OUTER ROOF PANEL to the wall panels at the predrilled holes. (see Figure 5)



Figure 5

F. Installing the BENCH SUPPORTS, BENCHES, and STEP

1. First, you will need to locate the BENCH SUPPORT and slide it downward into the guides on the side wall panels. Use the provided screws to screw it into position at both sides. For **GDI-8003-01**, proceed to #4. (see Figure 6)



Figure 6

2. For **GDI-8005-01**, you will need to install the SIDE BENCH FRAME SUPPORT at the front glass panel and use the provided screws to screw it into position. (see Figure 6a)



Figure 6a

3. You will now need to install the RIGHT SIDE BENCH SUPPORT between the already installed BENCH SUPPORT and the SIDE BENCH FRAME SUPPORT. Use the provided screws to screw it into position. (see Figure 6b)



Figure 6b

4. Next, locate the large BENCH that will need to be installed at the REAR WALL PANEL. Carefully maneuver the large BENCH into the interior of the sauna room and install it on top of the BENCH SUPPORT. Next, locate and install the smaller BENCH at the RIGHT SIDE WALL PANEL on model **GDI-8005-01**. Use the provided screws to screw into position. (see Figure 6c and 6d)



Figure 6c



Figure 6d

5. The STEP can now be installed in front of the BENCH. Proceed to locate the long STEP to be installed in front of the BENCH. You will need to pull the center support of the STEP at a 90-degree angle at the hinge. Position the STEP in front of the BENCH and use the provided screws to screw the STEP down to the FLOOR PANEL. See Figure 6e. For **GDI-8005-01**, locate the SQUARE STEP SUPPORT as seen in 6f and place it into position in front of the RIGHT SIDE BENCH SUPPORT. The side with the pre-drill holes will be at the FLOOR PANEL. Use the provided screws to screw the SQUARE STEP SUPPORT to the FLOOR PANEL as seen Figure 6f. Place the small STEP on top and use the provided screws to screw it into position.



Figure 6e



Figure 6f

G. Installing the DOOR HANDLE

1. Locate the DOOR HANDLE. The exterior side will have the clear coat finish and the interior will be the all-natural side. Unscrew the DOOR HANDLE in order to install it on the glass door.

H. Installing the Heater and Heater Wood Guard

Please Note: The heater must be installed by a certified electrician per the manufacturer's manual. The heater must be installed per the electrical code in your area with reference to the breaker and wire sizes & wire material. Be sure to follow the manufacturer's manual for proper and safe installation of the heater. For the Harvia The Wall Heater, it is very important to run the heater power cord through the vent hole in the wall panel and close the vent before installing the heater as you will not be able to open the vent once the heater is installed. See Figure 7. After the heater is mounted, you can install the wood housing for the heater. The wood housing does vary in styles. It is recommended to leave the vents open when the sauna is in use.

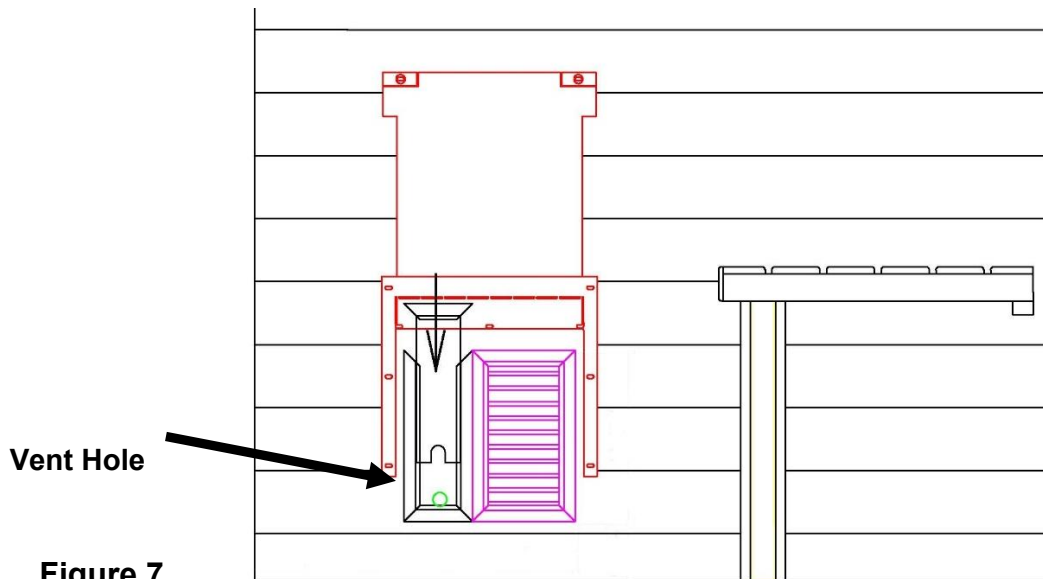


Figure 7

1. First, you will need to locate the wood housing for the heater and assemble it using the provided 3.5x40mm wood screws. (see Figure 8)

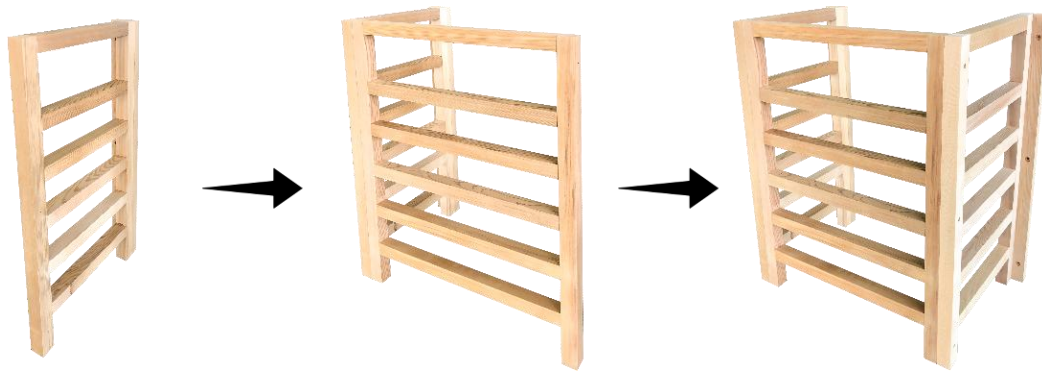


Figure 8

2. Next, you will need to mount the wood housing to the sauna wall panel using the provided screws. You will install the wood housing around the heater as the heater does get very hot. (see Figure 9)



Figure 9

ASSEMBLY COMPLETED

SAUNA CONTROL PANEL - GENERAL INTRODUCTION

1. Description of Functions of the Sauna's Control Panel

Functions	
Touch Key Technology	✓
Bluetooth	✓
Chromotherapy Lighting	✓
Time/Temperature Adjustment	✓

2. Control System Specifications

- A. Rated Voltage: AC100V-AC240V
- B. Rated Power: 50Hz/60Hz
- C. Touch Key technology

3. Devices controlled by the Control System are:

- A.) Chromotherapy Lighting
- B.) Radio/Bluetooth




4. Control Panel Display:





Note: Power cord must be removed for the Accessory Box and plugged at the rear of the sauna and into a 120V 15AMP outlet to operate the Control Panel.

CAUTION: Exit sauna immediately if you feel dizzy, sleepy, or any discomfort.


CONTROL PANEL OPERATION

1. The Power Button “” powers the control panel. Press the “” button to turn the control panel ON/OFF. Once you press the “”, the display will show “ - - - - ” and the Chromotherapy Light will turn ON.


2. The “” button at the right side of the control panel has no function.

3. Press the “” button (at the left side of the control panel) to turn the Chromotherapy Light ON/OFF. If not already, you will need to insert the batteries into the remote. Use the remote to change the colors of the Chromotherapy Light. You can press any of the color buttons on the remote and that color will be displayed. You can use the shade button on the remote to go through a sequence of colors. If you want to turn the Chromotherapy Light OFF during your session, you can press the POWER button on the remote. The Red Light Therapy feature works with the Chromotherapy Light. When the Chromotherapy Light is ON, you can press the White Light button at the bottom right of the remote once and the Chromotherapy Light will change from the existing color to the White Light/Reading Light. Pressing the White Light button again will turn ON the Red Light Therapy feature. To exit the Red Light Therapy feature and return back to the White Light/Reading Light, just press the White Light button at the bottom right of the remote again and the White Light/Reading Light will be displayed. Now once again you can press any of the color buttons on the remote and that color will again be displayed. **Please note: You must be inside the sauna room for the remote to work.**



4. Press the “” button to enable Bluetooth and the screen will display “bLU”. Please note that no password is needed during the Bluetooth pairing. Press the “TUN-“ and “TUN+” to select a song. Press the “VOL-“ and “VOL+” to adjust the volume.

5. Press the “FM” button to select the radio function or to turn the radio OFF. Once you press the “FM” button is pressed, the LED display will show the radio station. Press the “TUN-“ and “TUN+” to scroll through the radio stations or press and hold the “FM” button to search through the stations automatically. Press the “VOL-“ and “VOL+” to adjust the volume. The control panel radio tuner does have a simple antenna system and may not pull in all radio stations in your area.

6. If the user does not press any buttons for longer than 3 minutes, the control panel will “lock” as a safety feature. When pressing any buttons on the control panel after the 3 minutes, the screen will display “LOC”. To unlock the control panel, press and hold the “” button.

CAUTION: Exit sauna immediately if you feel dizzy, sleepy, or any discomfort.

Maintenance:

With regards to maintenance, you do not want to use any liquid cleaners or aerosol cleansers inside the sauna. Unplug/shut off the circuit breaker before cleaning the sauna. Use plain water and a soft cloth for cleaning the interior. **Do not use benzene, alcohol, or strong cleaning chemicals in or on the sauna. NOTE: Any chemical that can damage wood or be absorbed into the wood will damage the sauna.** The exterior will need to be properly maintain regularly by applying a water repellent sealant to the exterior wood within a month of assembly and 2-3 times per year from there on.

Tips for using Your Sauna

- 1) If you take a hot/warm shower or bath before using your sauna, you may perspire more and experience more comfort.
- 2) Drink water prior to, during, and after your sauna session to replenish body fluids.
- 3) The ventilation vent is installed on the sauna and should never be obstructed.
- 4) You can use 2 towels during your sauna session. Fold one of the towels several times and place it on the bench. This towel will absorb some of your perspiration while adding comfort as you sit on the bench. Use a second towel to wipe perspiration from your body from time to time.
- 5) This is a non-commercial sauna. For every four hours ON, the sauna must be turned OFF for one hour to cool down.

- 6) At the first sign of a cold or flu, increasing your sauna sessions may be beneficial in boosting your immune system and decreasing the reproductive rate of viruses.
- 7) To help relieve sore and tense muscles, massage the affected areas during your sauna session.
- 8) The peaceful and relaxed state rendered by a sauna session may help you to sleep easier and deeper.
- 9) To protect the user from coming into contact with the heater, be sure to install the heater wood guard.
- 10) After the sauna session is over, do not jump into the shower or bath immediately. Because your body was heated up during the sauna session, it will continue to perspire even after you exit the sauna room. Sit in the sauna with the door open slightly and let your body cool down. Once your body has cooled down and you feel comfortable, you can exit the sauna. After about twenty minutes and when your body has completely cooled down, you can take a shower to rinse the perspiration off your body.
- 11) To avoid a hazard, do clean the sauna floor of all perspiration and debris after each sauna session.

Safety Instructions

- 1.) Read and follow all instructions carefully before using the sauna.
- 2.) When installing and using the electrical equipment, safety precautions should always be followed.
- 3.) To reduce the risk of injury, do not allow children to use the sauna unless they are directed by a medical doctor and are closely supervised at all times by an adult.
- 4.) Do not use the sauna immediately following strenuous exercises. Wait at least 30 minutes to allow the body to cool down completely.
- 5.) Pregnant or possibly pregnant women should contact their physician prior to using the sauna. Excessive temperature has a high potential for causing fetal damage during pregnancy.
- 6.) **Hyperthermia Danger:** the normal body temperature can't rise above 39°C (103°F). Symptoms of excessive hyperthermia include dizziness, lethargy, drowsiness, and fainting. The effects of excessive hyperthermia may include failure to perceive heat, physical inability to exit sauna, unawareness of impending hazard, unconsciousness and fetal damage in pregnant women. Hyperthermia could make your body's core temperature rise. Setting desired temperature to an excessively high temperature is not recommended.
- 7.) The use of alcohol, drugs, or medications prior to or during the sauna session may

- lead to unconsciousness and/or other harmful physical injuries.
- 8.) Persons suffering from obesity or with a medical history of heart disease, low or high blood pressure, circulatory system problems, or diabetes should consult a physician prior to using the sauna.
 - 9.) Persons using medications should consult a physician before using the sauna. Some medications may induce drowsiness while others may affect the heart rate, blood pressure, and/or blood circulation.
 - 10) Exercise care before and after sauna use.
 - 11) Never sleep inside the sauna.
 - 12) Do not use any type of cleaning agents on the interior of the sauna. Only wipe down with a cloth and water.
 - 13) Do not stack or store any object on top or inside the sauna.
 - 14) If the heater cord becomes damaged, it must be replaced immediately by a certified electrician. If you find the power cord is too hot or that the electrical equipment may be experiencing technical problems, please contact the manufacturer of the heater or its agent immediately to avoid hazardous conditions.
 - 15) Do not use the sauna during an electrical storm to avoid risk of shock.
 - 16) Do not touch the glass door hinges during sauna use as they become very hot to the touch.
 - 17) Your hands must be dry and free of moisture before plugging and unplugging cords and wiring harnesses. Never operate the sauna with wet hands or wet feet to avoid risk of electric shock. Never touch the metal prongs of the plug.
 - 18) Do not attempt to make any repairs yourself without contacting the manufacturer first. If a problem occurs with the sauna, please contact seller, distributor, or the manufacturer to avoid safety risks. Unauthorized repair attempts will void the manufacturer's warranty.
 - 19) Please make sure the supplied power meets the specifications required. Failure to meet the requirements may cause safety risks.
 - 20) Do not attempt to touch any electrical parts or make repairs on your own when using the sauna.
 - 21) Do not bump, hit, or break the heater as it may cause an electrical short and pose a safety risk.
 - 22) Do not make any modifications to the sauna, the sauna structure, or the sauna components.
 - 23) Prior to each sauna session, the sauna room is to be inspected for correct operation. If for any reason your sauna room does not seem to be operating properly, discontinue use and contact the manufacturer.

Safeguards For Your Sauna

1. Do not install the sauna near an open water source.
2. Do not use liquid cleaners or aerosol cleansers inside the sauna. Make sure the power source is off before cleaning. Use plain water and a soft cloth for cleaning.
3. The power cord should be routed so that it is not walked on or pinched by any object that may be placed against it.
4. When replacement parts are required, be sure they meet the specified requirements of the manufacturer. Unauthorized substitutes may result in fire, electric shock, or other hazardous conditions. After any repairs, please ask the service technician to perform safety checks to determine that your sauna is working properly.
5. Do not use any wall receptacle adapter or extension cords. The heater must be hardwired by a certified electrician.
6. For sauna rooms with exterior wood finishes, you will need to maintain the exterior finish. **Never use stain on the interior of the sauna as it must remain all natural.** Consult the stain manufacturer for any off-gassing concerns. Please note that the cedar wood does start turning grey after approximately 1 – 2 years if the wood is not maintained with a UV protectant.
7. To clean the interior, you can vacuum and sweep down the floors. Use water and a non-toxic cleaner with a damp cloth to wipe down the entire sauna including the benches and walls. For cleaning the heater and stones, please refer to the manufacturer's instructions. Improper use or placement of stones within the heater can result in improper performance of the heater and hazardous conditions. Please note that the heater must be OFF and covered when cleaning the interior of the sauna so not to damage any of the components of the heater, especially if you hose down the interior of the barrel sauna.

Limited Lifetime Warranty

***Limited Lifetime Warranty:** Golden Designs, Inc. warrants the sauna room against defects in material and workmanship for the life of the product from the original date of purchase. **The sauna is for outdoor use. When placed outdoors, a water proof cover or the sauna shingle roof may be installed to cover the sauna room for protection. Any damage due to direct exposure to outdoor weather elements such as rain, snow, sun, wind or extreme temperatures will not be covered by this warranty if your sauna was not designed to be directly in the weather elements. Any damages as a result of modifications made to the sauna or its components will void this warranty.**

Extent of Warranty: This limited warranty applies to products manufactured or distributed by Golden Designs, Inc. under its brand names, delivered in the contiguous United States or Canada and extends to the original purchaser at the original site of installation only. This warranty becomes valid at time of purchase and terminates either by specified time frame, owner transfer, or relocation. The warranty extends to the sauna room and excludes the heater as it is covered by its own manufacturer warranty. **Your sales receipt showing the date of purchase of the product is your proof of purchase.**

Manufacturer Warranty

All Golden Designs, Inc. products are manufactured with the highest quality and are warranted to be free from defects in material and workmanship at the time of delivery. The warranty is extended through the manufacturer for the product including, but not limited to: sauna room, sauna control panel, and the connected wire harnesses. All exchanged parts and products replaced under this warranty will become the property of Golden Designs, Inc. Golden Designs, Inc. reserves the right to change for any part not covered under the existing warranty. Any parts determined to be defective must be returned to Golden Designs, Inc. at its discretion to obtain warranty service. You must prepay any shipping charges, export taxes, custom duties and taxes, or any other charges associated with the transportation of the parts. In addition, you are responsible for insuring any parts shipped or returned. You must present Golden Designs, Inc. with proof of purchase documents (including the date of purchase). Any evidence of alteration, erasing or forgery of proof of purchase documents will be cause to **VOID** this limited warranty. Products on which the serial number has been defaced or removed is not eligible for warranty service. The product warranty covers parts, but does not cover labor.

Warranty Limitations

This warranty does not apply if the unit has been subject to negligence, alteration, modification, misuse, abuse, repairs by non-Golden Designs, Inc. authorized personnel, inappropriate installations, or any case beyond the control of Golden Designs, Inc. invalidating this warranty including but are not limited to:

- Improper use of lacquer or paints
- Sauna and other Golden Designs, Inc. products accessories placed on non-approved surfaces
- Outdoor applications not protected safely from outdoor weather elements, including the glass door
- Normal wear and tear or weathering
- Use of product not in accordance with instructions
- Improper use of the sauna

- Moisture or water seepage

Surface cracks are not considered defects in material or workmanship, as they are normal characteristics of all woods. This includes minor cracks due to wood expansion and contraction. Since the wood used in construction may have been kiln dried, a certain amount of expansion and contraction occurs in the wood in a sauna environment. Please note that water seepage will not hurt the wood and is a normal tendency of outdoor application. The water will usually dry quickly due to the heated environment. If you want to keep the sauna completely dry, you will need to install it under a covered structure.

Disclaimers

Golden Designs, Inc. shall not be liable for loss of use of sauna or other Golden Designs, Inc. products or other secondary or incidental or consequential costs, expense or damages - which may include the removal of permanent structures or other custom fixtures or the necessity for crane removal - arising directly or indirectly out of the use or inability to use the product. Any implied warranty shall have duration equal of the applicable warranty stated above. Under no circumstances shall Golden Designs, Inc. or any of its representatives be held liable for injury to any person or damage to any property, however arising. Specifications are subject to change without notice or obligation.

Legal Remedies

This limited warranty gives you specific legal rights. You may have other rights, which may vary from state to state.

Customer Service

For customer service, contact your authorized dealer. If you need additional information or assistance, please email Golden Designs, Inc. at info@goldendesignsinc.com or call (909) 212-5555.

***Limited Lifetime Warranty of Sauna Products is 5 years for residential use and 1 year for commercial use on wood structure (when properly maintained), control panel, and applicable control panel harnesses and lights from the date of purchase. Stove/heater is covered under its manufacturer's applicable warranty.**

WARRANTY REGISTRATION

Congratulations on your purchase of an Infrared Sauna from Golden Designs, Inc. Please take the time to register your warranty using the QR Code:



If you do not have the QR Code Reader, you can also register at:

<https://app.goldendesigninc.com/public/RegisteredProduct>

Please include a copy of your sales receipt or packing slip when registering. The serial number (S/N) is located on the sauna's front panel, rear panel, or on the carton.

The warranty must be registered within 60 days of the purchase date.

